

# **SOUTH AUSTRALIAN ECONOMIC INDICATORS**

EMBARGO: 11:30AM (CANBERRA TIME) MON 1 DEC 2003

## **C O N T E N T S**

	<i>page</i>
Notes.....	2
REVIEW	
Overview .....	3
Selected features .....	4
TABLES	
List of tables .....	5
Statistical summary .....	6
State summary .....	8
State accounts .....	9
International trade .....	10
Consumption and investment .....	13
Production .....	15
Consumer price index .....	19
Labour force and demography .....	20
Average weekly earnings .....	23
Financial markets .....	24
ADDITIONAL INFORMATION	
Sources for summary tables .....	25

## **I N Q U I R I E S**

- For further information about these and related statistics, contact Felicité McCracken on Adelaide (08) 8237 7604 or the National Information and Referral Service on 1300 135 070.

## NOTES

### FORTHCOMING ISSUES

<i>ISSUE</i>	<i>RELEASE DATE</i>
January 2004	19 December 2003
February 2004	2 February 2004
March 2004	1 March 2004
April 2004	1 April 2004
May 2004	3 May 2004
June 2004	1 June 2004

### ABOUT THIS PUBLICATION

*South Australian Economic Indicators* is a monthly publication which contains the latest available data at the time of preparation for a range of statistical series that have been identified as indicators of economic activity in this State. In a number of cases the figures presented are preliminary and subject to revision in subsequent issues.

### SYMBOLS AND OTHER USAGES

\$b	billion dollars (one thousand million)
\$m	million dollars
n.a.	not available
n.y.a.	not yet available
qtr	quarter
*	subject to sampling variability too high for most practical purposes
..	not applicable
0, 0.0	nil, or rounded to zero

### ROUNDING

Where figures have been rounded, discrepancies may occur between sums of the component items and totals.

### INFORMATION

More detailed information on each series, including explanatory and technical notes, can be obtained from other Australian Bureau of Statistics publications or alternative data sources. To assist those seeking further information, publication source numbers are shown in tables 1 and 2, as a reference to the source of summary tables section on page 25.

Ian Crettenden  
Regional Director  
South Australia

## OVERVIEW

The data in this Overview are presented in trend terms, unless otherwise stated.

### INTERNATIONAL TRADE

The value of South Australian merchandise exports (in original terms) for the month of September 2003 was \$664.9m. This was an increase of 3.8% over August 2003 but was 12.9% less than the value of exports in September 2002 (\$763.6m).

The value of South Australian merchandise imports (in original terms) for September 2003 was \$434.0m. This was an increase of 1.8% from \$426.5m recorded in August 2003 and 8.6% less than the September 2002 figure of \$474.6m.

### CONSUMPTION AND INVESTMENT

In current price terms, National Accounts figures for 2002–03 year showed that state final demand in South Australia increased by 10.2% from the previous year, to \$55.2b. Household consumption expenditure grew by 8.3% from 2001–02 to \$33.5b, and private gross capital formation also increased by 25.3% to \$10.5b. Gross state product rose by 3.4% to \$48.9b for 2002–03.

In the twelve months to September 2003 retail turnover increased by 2.1% to \$1,100.6m. This was a decrease of 0.4% from the August 2003 figure of \$1,105.1m.

October 2003 saw a total of 5,439 new motor vehicle sales—an increase of 1.0% on the previous month's figure of 5,383 vehicles, and 22.4% higher than the 4,444 vehicles recorded in October 2002.

### HOUSING

In September 2003 the estimated number of dwelling units approved in South Australia was 923, having risen for the last five months. The trend for private sector houses has continued to rise for the last seven months.

### CONSUMER PRICE INDEX

The all groups consumer price index in Adelaide for the September quarter 2003 was 145.4, an increase of 3.6% on the level recorded for the September 2002 quarter and up 0.8% on the June quarter 2003.

### LABOUR FORCE AND DEMOGRAPHY

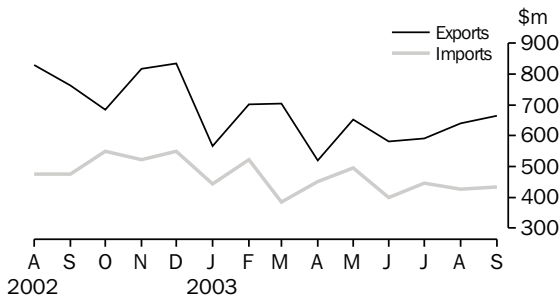
The estimate of employed persons in South Australia was 714,000 persons in October 2003 and was 2.6% higher than the level of twelve months ago (696,200 persons). The total number of persons employed full-time in South Australia was 497,200 in October 2003, 3.4% higher than the October 2002 estimate of 480,800. In October 2003, the unemployment rate for South Australia was 6.0%. The estimate of the participation rate in South Australia rose from 60.7% in October 2002 to 61.6% in October 2003.

### FINANCIAL MARKETS

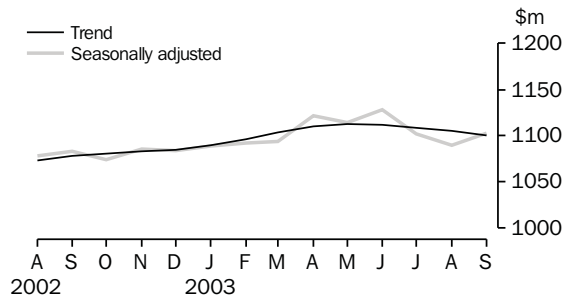
The value of secured housing finance commitments (excluding alterations and additions) was \$676.4m in September 2003. This was an increase of 0.9% over the previous month and 34.6% over the value of commitments in September 2002 (\$502.5m).

## SELECTED FEATURES

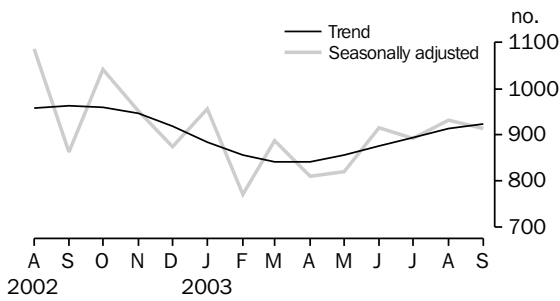
MERCHANDISE EXPORTS AND IMPORTS



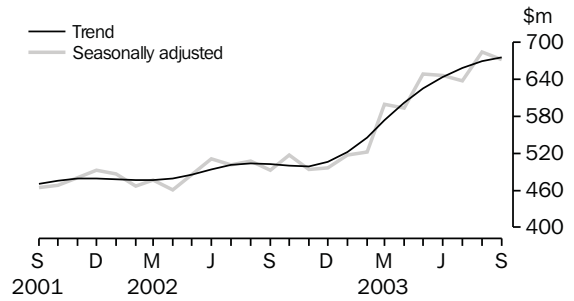
RETAIL TURNOVER



DWELLING UNITS APPROVED

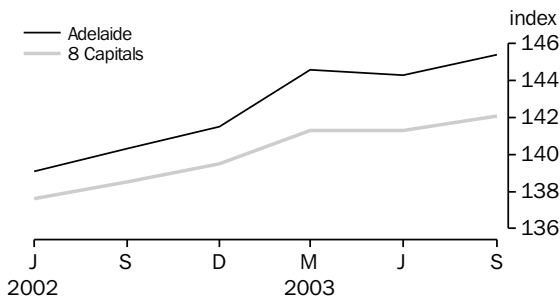


SECURED HOUSING FINANCE COMMITMENTS(a)

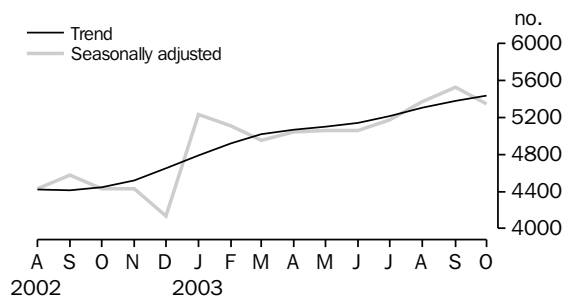


(a) Excludes alterations and additions. Includes refinancing.

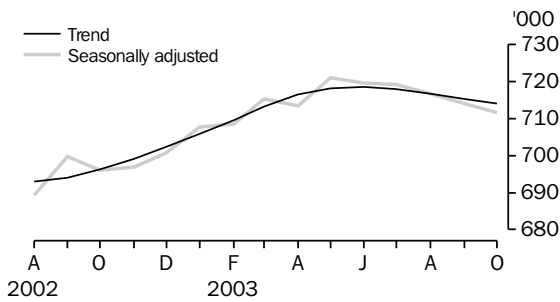
CONSUMER PRICE INDEX



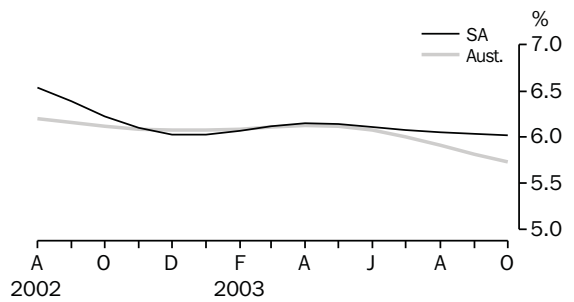
NEW MOTOR VEHICLE SALES



EMPLOYED PERSONS



UNEMPLOYMENT RATES—TREND



## LIST OF TABLES

			Page
STATISTICAL SUMMARY	<b>1</b>	Statistical summary	6
	<b>2</b>	State summary	8
STATE ACCOUNTS	<b>3</b>	State accounts at current prices	9
	<b>4</b>	State accounts at chain volume measures	9
INTERNATIONAL TRADE	<b>5</b>	Merchandise exports, by selected commodity group	10
	<b>6</b>	Merchandise exports, by selected countries and country groups	11
	<b>7</b>	Merchandise imports, by selected commodity group	12
CONSUMPTION AND INVESTMENT	<b>8</b>	Turnover of retail establishments, by industry—trend	13
	<b>9</b>	New motor vehicle sales, by type of vehicle	13
	<b>10</b>	Actual private new capital expenditure, by selected industry and type of asset	14
	<b>11</b>	Tourist accommodation	14
PRODUCTION	<b>12</b>	Building approvals	15
	<b>13</b>	Building commencements	16
	<b>14</b>	Value of building work done and completed during period	17
	<b>15</b>	Production, livestock products and selected commodities	18
	<b>16</b>	Consumer price index, by group—Adelaide	19
LABOUR FORCE AND DEMOGRAPHY	<b>17</b>	Estimated resident population and components of population change	20
	<b>18</b>	Births, deaths, marriages and divorces	20
	<b>19</b>	Civilian labour force status	21
	<b>20</b>	Civilian labour force, unemployment and participation rates	22
AVERAGE WEEKLY EARNINGS	<b>21</b>	Average weekly earnings of employees	23
FINANCIAL MARKETS	<b>22</b>	Secured housing finance commitments	24
	<b>23</b>	Finance commitments	24

Indicator	Period	South Australia			Australia			SA as a % of Aust.	Source index
		Number	% change from		Number	% change from			
			Previous period	Same period previous year		Previous period	Same period previous year		
<b>State accounts</b>									
Domestic final demand									
Current prices trend (\$m)	June qtr 03	14 299	2.5	9.5	197 018	1.5	7.3	7.3	(1)
Chain volume measures trend (\$m)	June qtr 03	13 812	1.8	6.5	191 307	1.0	5.0	7.2	(1)
Private final consumption expenditure									
Current prices trend (\$m)	June qtr 03	8 607	1.8	7.8	115 862	1.3	5.9	7.4	(1)
Chain volume measures trend (\$m)	June qtr 03	8 240	1.2	4.2	112 260	1.0	3.5	7.3	(1)
Private gross fixed capital formation									
Current prices trend (\$m)	June qtr 03	2 675	4.2	19.8	39 044	1.7	12.6	6.9	(1)
Chain volume measures trend (\$m)	June qtr 03	2 654	4.5	19.4	38 262	1.2	10.6	6.9	(1)
Compensation of employees									
Current prices trend (\$m)	June qtr 03	5 923	1.6	6.2	92 079	1.5	6.5	6.4	(1)
<b>International accounts</b>									
Exports (\$m)	Sep 03	664.9	3.8	-12.9	9 105.6	0.2	-8.2	7.3	(2)
Imports (\$m)	Sep 03	434.0	1.8	-8.6	11 492.8	5.7	6.2	3.8	(2)
<b>Consumption and investment</b>									
Retail turnover									
Current prices original (\$m)	Sep 03	1 057.8	-0.5	2.8	14 850.5	0.2	8.2	7.1	(3)
Current prices trend (\$m)	Sep 03	1 100.6	-0.4	2.1	15 348.2	0.7	6.8	7.2	(3)
Chain volume measures original (\$m)	Sep qtr 03	3 116.2	-0.8	0.6	43 503.2	3.7	5.4	7.2	(3)
New motor vehicle sales									
Original (no.)	Oct 03	5 430	4.0	20.7	79 225	1.8	9.5	6.9	(4)
Trend (no.)	Oct 03	5 439	1.0	22.4	79 774	0.3	14.9	6.8	(4)
Private new capital expenditure									
Current prices original (\$m)	June qtr 03	1 138	26.9	26.9	13 423	15.2	11.2	8.5	(5)
Current prices trend (\$m)	June qtr 03	1 088	8.4	25.9	12 836	0.8	11.1	8.5	(5)
Private new capital expenditure (\$m)	2002-03	4 015	29.0	..	51 098	15.1	..	7.9	(5)
Tourist accommodation takings (\$m)	Mar qtr 03	59.1	-8.9	1.5	1 244.7	-5.3	2.5	4.8	(6)
<b>Production</b>									
Dwelling unit approvals									
Original (no.)	Sep 03	962	10.3	11.9	16 402	12.0	18.6	5.9	(7)
Trend (no.)	Sep 03	923	1.0	-4.2	15 465	1.9	0.4	6.0	(7)
Dwelling units commenced (no.)	June qtr 03	2 450	3.6	-7.3	38 658	1.3	-11.4	6.3	(8)
Value of non-residential building approvals—trend (\$m)									
	Sep 03	70.6	-12.1	-19.3	1 436.4	0.5	2.1	4.9	(7)
Value of total building activity									
Commenced (\$m)	June qtr 03	654.2	15.5	14.1	11 787.8	1.8	3.5	5.5	(8)
Work done (\$m)	June qtr 03	659.8	14.2	18.1	12 031.1	7.9	10.4	5.5	(8)
Work yet to be done (\$m)	June qtr 03	1 032.6	3.5	31.7	20 908.8	1.8	22.4	4.9	(8)
Value of engineering construction work done (\$m)									
	June qtr 03	499.1	10.5	29.5	6 871.5	16.4	21.2	7.3	(9)
Manufacturing production									
Red meat trend (tonnes)	Sep qtr 03	54 332	-5.4	-13.3	712 179	-3.3	-10.7	7.6	(11)
Mineral exploration expenditure (other than for petroleum) (\$m)									
	June qtr 03	11.0	83.3	11.1	203.4	32.6	20.9	5.4	(12)

Indicator	Period	South Australia			Australia			SA as a % of Aust.	Source index
		Number	% change from		Number	% change from			
			Previous period	Same period previous year		Previous period	Same period previous year		
<b>Prices(a)</b>									
CPI—All groups (index no.)	Sep qtr 03	145.4	0.8	3.6	142.1	0.6	2.6	..	(13)
Price index of materials used in house building (index no.)	Sep qtr 03	137.4	0.4	2.2	132.9	0.6	3.2	..	(14)
Price index of materials used in building other than houses (index no.)	Sep qtr 03	125.6	0.4	3.1	126.3	0.5	3.9	..	(14)
Price index of established houses (index no.)	June qtr 03	199.1	7.6	24.7	223.8	5.0	18.1	..	(15)
Price index of project homes (index no.)	June qtr 03	157.9	0.8	4.4	147.9	2.2	5.7	..	(15)
<b>Labour force and demography</b>									
Population (resident at end qtr) ('000)	Mar qtr 03	1 528.2	0.3	0.6	19 875.0	0.5	1.3	7.7	(16)
Natural increase of the population ('000)	Mar qtr 03	1.7	-62.0	-1.9	28.1	-8.1	-10.6	6.1	(16)
Labour force									
Original ('000)	Oct 03	757.7	-1.1	2.0	10 187.0	-0.5	2.3	7.4	(17)
Trend ('000)	Oct 03	759.8	-0.2	2.3	10 147.6	0.1	1.3	7.5	(17)
Employed persons									
Original ('000)	Oct 03	713.0	-0.9	2.2	9 637.3	-0.1	2.6	7.4	(17)
Trend ('000)	Oct 03	714.0	-0.2	2.6	9 565.8	0.2	1.8	7.5	(17)
Participation rate									
Original(b) (%)	Oct 03	61.3	-0.8	0.6	63.7	-0.5	0.3	..	(17)
Trend(b) (%)	Oct 03	61.6	-0.1	0.9	63.5	0.0	-0.2	..	(17)
Unemployment rate									
Original(b) (%)	Oct 03	5.9	-0.2	-0.2	5.4	-0.4	-0.3	..	(17)
Trend(b) (%)	Oct 03	6.0	0.0	-0.2	5.7	-0.1	-0.4	..	(17)
Job vacancies ('000)	Aug 03	6.4	10.2	-17.8	108.8	9.4	-0.7	5.9	(18)
Industrial disputes ('000 working days lost)	Aug 03	0.1	-97.1	-92.3	25.7	-40.4	52.1	0.4	(19)
<b>Income</b>									
Average weekly earnings (full-time adults; ordinary time)									
Original (\$)	Aug qtr 03	863.9	0.5	7.3	929.6	0.9	5.7	..	(20)
Trend (\$)	Aug qtr 03	871.9	1.5	8.0	931.4	1.5	6.1	..	(20)
Wage cost index (total hourly rate excluding bonuses)(c) (index no.)	Sep qtr 03	121.6	1.6	4.0	121.6	1.2	3.6	..	(21)
<b>Financial markets</b>									
Secured housing finance(d)									
Original (\$m)	Sep 03	655.5	4.6	44.3	11 422.3	4.9	41.8	5.7	(22)
Trend (\$m)	Sep 03	676.4	0.9	34.6	11 444.1	3.1	35.1	5.9	(22)
Finance commitments									
Personal (\$m)	Sep 03	426.9	1.8	29.2	6 766	3.1	33.2	6.3	(23)
Commercial (\$m)	Sep 03	951.2	2.6	-0.7	22 709.2	-3.3	9.2	4.2	(23)
Lease (\$m)	Sep 03	14.9	14.3	11.4	534.1	-1.6	5.6	2.8	(23)
Interest rates(b)									
Banks new housing loans (%)	Sep 03	..	..	..	6.55	0.0	0.0	..	(24)
Bank loans—small, medium business(e) (%)	Sep 03	..	..	..	8.35	0.0	0.0	..	(24)
Bank loans—large business (%)	Sep 03	..	..	..	8.35	0.0	0.0	..	(24)

(a) Base year of each index 1989-90 = 100.

(b) Change is shown in terms of percentage points.

(c) Base year of index Sep 1997 = 100.

(d) Excludes alterations and additions. Includes refinancing.

(e) Rate for business loans over \$50,000.

## 2

## STATE SUMMARY

<i>Indicator</i>	<i>Period</i>	<i>NSW</i>	<i>Vic.</i>	<i>Qld</i>	<b>SA</b>	<i>WA</i>	<i>Tas.</i>	<i>NT</i>	<i>ACT</i>	<i>Source index</i>
SELECTED INDICATORS										
CPI—All groups(a) (index no.)	Sep qtr 03	142.4	141.8	143.3	<b>145.4</b>	138.6	141.1	137.8	141.9	(13)
Participation rate trend (%)	Oct 03	62.7	63.1	64.9	<b>61.6</b>	65.7	59.1	69.8	71.3	(17)
Unemployment rate trend (%)	Oct 03	5.6	5.3	6.3	<b>6.0</b>	6.2	6.7	5.7	4.1	(17)
Average weekly earnings (full-time adults; ordinary time) trend (\$)	Aug qtr 03	974.00	933.40	861.90	<b>871.90</b>	931.50	836.40	910.50	1 064.90	(20)
SELECTED INDICATORS PER HEAD OF POPULATION(b)										
State final demand										
Chain volume measures trend(c) (\$'000)	June qtr 03	9.8	9.6	9.1	<b>9.0</b>	9.7	8.0	13.2	16.6	(1)
Retail turnover										
Current prices original (\$)	Sep 03	764.1	702.9	782.1	<b>696.0</b>	735.3	644.6	860.3	959.9	(3)
Current prices, trend	Sep 03	788.8	733.5	805.9	<b>720.2</b>	768.5	690.4	790.1	988.7	(3)
New motor vehicle sales trend (no. per '000 population)	Oct 03	3.9	4.2	4.3	<b>3.6</b>	3.8	3.7	3.1	4.0	(4)
Private new capital expenditure										
Current prices trend (\$)	June qtr 03	534.1	641.0	606.7	<b>712.0</b>	988.0	434.7	2 404.7	525.0	(5)
Dwelling unit approvals										
Original (no. per '000 population)	Sep 03	0.646	0.890	1.052	<b>0.630</b>	0.984	0.491	1.182	1.137	(7)
Trend (no. per '000 population)	Sep 03	0.627	0.814	1.023	<b>0.604</b>	0.972	0.512	0.462	0.488	(7)
Secured housing finance(d) (\$)	Sep 03	686.2	497.2	594.5	<b>428.9</b>	558.0	301.8	339.4	558.1	(22)
PERCENTAGE CHANGE FROM PREVIOUS PERIOD										
State final demand										
Chain volume measures trend (%)	June qtr 03	1.0	0.5	1.2	<b>1.8</b>	1.6	0.5	2.2	1.1	(1)
Retail turnover										
Current prices original (%)	Sep 03	1.0	-0.4	1.3	<b>-0.5</b>	-1.4	0.9	-6.1	-1.1	(3)
Current prices, trend	Sep 03	0.6	0.5	1.4	<b>-0.4</b>	0.8	1.2	0.7	0.3	(3)
New motor vehicle sales trend (%)	Oct 03	-0.4	-0.3	1.1	<b>1.0</b>	0.6	5.0	-1.0	0.5	(4)
Private new capital expenditure										
Current prices trend (%)	June qtr 03	0.0	-1.5	0.9	<b>8.4</b>	5.6	-2.4	1.5	3.7	(5)
Dwelling unit approvals										
Original (%)	Sep 03	6.6	19.5	5.9	<b>10.3</b>	3.2	-5.3	301.7	192.1	(7)
Trend (%)	Sep 03	2.3	0.4	3.7	<b>1.0</b>	1.9	0.1	11.6	-2.8	(7)
CPI—All groups (%)	Sep qtr 03	0.1	0.6	1.1	<b>0.8</b>	0.9	0.2	-0.1	0.9	(13)
Participation rate trend(e) (%)	Oct 03	0.0	-0.1	0.1	<b>-0.1</b>	-0.2	0.2	-0.2	0.0	(17)
Unemployment rate trend(e) (%)	Oct 03	-0.1	-0.1	-0.1	<b>0.0</b>	0.1	-0.1	-0.1	-0.1	(17)
Average weekly earnings (full-time adults; ordinary time) trend (%)	Aug qtr 03	1.0	1.5	2.3	<b>1.5</b>	2.0	0.7	1.6	1.3	(20)
Secured housing finance (%)	Sep 03	6.0	2.1	6.5	<b>4.6</b>	1.8	6.5	23.5	14.0	(22)
(a) Base year of index 1989–90 = 100.										
(b) The latest quarterly estimate of Australian resident population has been used to calculate ratios for subsequent periods.										
(c) Reference year for chain volume measures is 2001–02.										
(d) Excludes alterations and additions. Includes refinancing.										
(e) Change is shown in terms of percentage points.										



### 3

#### STATE ACCOUNTS AT CURRENT PRICES

Period	<i>Final consumption expenditure</i>		<i>Gross fixed capital formation</i>		State final demand	Gross State product	Compensation of employees
	Households	General government	Private	Public			
ANNUAL (\$m)							
<b>2000-01</b>	28 873	8 871	8 518	97	46 358	44 211	20 811
<b>2001-02</b>	30 945	9 472	8 412	1 259	50 088	47 307	21 847
<b>2002-03</b>	33 504	9 769	10 540	1 373	55 186	48 897	23 148
QUARTERLY, TREND (\$m)							
<b>2001-02</b>							
March	7 805	2 441	2 105	390	12 740	n.a.	5 520
June	7 985	2 470	2 232	375	13 061	n.a.	5 577
<b>2002-03</b>							
September	8 153	2 489	2 329	363	13 334	n.a.	5 639
December	8 304	2 522	2 443	358	13 621	n.a.	5 731
March	8 458	2 567	2 567	359	13 948	n.a.	5 830
June	8 607	2 607	2 675	366	14 299	n.a.	5 293

Source: Australian National Accounts: National Income, Expenditure and Product (cat. no. 5206.0), and Australian National Accounts: State Accounts (cat. no. 5220.0).

### 4

#### STATE ACCOUNTS AT CHAIN VOLUME MEASURES(a)

Period	<i>Final consumption expenditure</i>		<i>Gross fixed capital formation</i>		State final demand	Gross State product
	Households	General government	Private	Public		
ANNUAL (\$m)						
<b>2000-01</b>	29 452	9 286	8 669	76	47 484	45 741
<b>2001-02</b>	30 945	9 472	8 411	1 259	50 088	47 307
<b>2002-03</b>	32 555	9 672	10 434	1 373	54 034	47 347
QUARTERLY, TREND (\$m)						
<b>2001-02</b>						
March	7 782	2 434	2 107	388	12 709	n.a.
June	7 909	2 460	2 223	375	12 965	n.a.
<b>2002-03</b>						
September	7 996	2 486	2 308	364	13 154	n.a.
December	8 060	2 508	2 416	360	13 342	n.a.
March	8 146	2 528	2 540	361	13 573	n.a.
June	8 240	2 539	2 654	368	13 812	n.a.

(a) Reference year for chain volume measures is 2001-02.

Source: Australian National Accounts: National Income, Expenditure and Product (cat. no. 5206.0), and Australian National Accounts: State Accounts (cat. no. 5220.0).

## 5

## MERCHANDISE EXPORTS, BY SELECTED COMMODITY GROUP(a)

<i>Period</i>	<i>Meat and meat preparations</i>	<i>Wheat</i>	<i>Wine</i>	<i>Wool and sheepskins (excl. wool tops)</i>	<i>Machinery</i>	<i>Metals and metal manufactures</i>	<i>Fish and crustaceans</i>	<i>Road vehicles, parts and accessories</i>	<i>Petroleum and petroleum products</i>	<i>Total(b)</i>
	\$'000	\$'000	\$'000	\$'000	\$'000	\$'000	\$'000	\$'000	\$'000	\$'000
<b>2000-01</b>	262 565	767 524	1 081 599	236 034	381 785	1 019 926	451 841	1 399 489	355 781	8 286 782
<b>2001-02</b>	316 263	1 154 933	1 358 316	256 722	321 445	913 417	474 854	1 613 919	250 728	9 103 263
<b>2002-03</b>	316 814	776 318	1 455 338	256 644	323 985	866 848	448 723	1 412 933	290 526	8 364 929
<b>2001-02</b>										
March	34 065	119 775	127 140	32 960	35 610	88 158	22 365	170 972	44 358	876 068
April	24 011	102 777	122 653	22 942	32 351	74 900	25 363	134 415	8 900	756 976
May	26 189	114 535	146 020	34 208	33 412	85 067	22 517	84 964	32 896	790 765
June	24 324	91 704	148 574	18 967	27 472	58 902	36 472	183 302	16 920	795 950
<b>2002-03</b>										
July	17 509	25 309	115 141	20 534	27 470	67 414	90 175	110 752	27 041	704 054
August	16 462	87 890	121 771	14 491	24 896	65 047	138 036	134 638	25 870	831 220
September	27 759	60 374	168 513	20 766	31 641	71 967	38 038	82 804	23 846	763 577
October	29 930	50 488	141 821	29 122	24 139	81 376	19 854	115 691	25 432	685 880
November	35 128	65 111	96 826	30 990	26 285	74 824	24 647	276 999	19 613	818 604
December	33 023	54 121	129 290	30 611	28 324	90 891	26 171	207 525	30 625	834 092
January	24 488	58 429	81 523	18 057	17 330	69 594	29 408	31 453	46 499	565 490
February	31 302	122 226	99 032	17 601	27 314	73 028	15 364	127 157	31 903	701 134
March	33 998	94 369	123 624	23 284	35 767	76 507	18 597	101 538	19 494	705 707
April	23 853	19 832	126 128	21 834	29 155	62 833	16 543	59 943	6 233	519 710
May	22 482	99 477	124 883	14 070	26 535	62 361	15 675	92 623	17 926	653 536
June	20 882	38 691	126 786	15 284	25 127	71 004	16 216	71 810	16 042	581 924
<b>2003-04</b>										
July	10 933	49 275	108 671	13 802	25 548	65 107	40 718	91 148	28 694	591 359
August	18 102	37 613	143 857	10 181	30 577	50 288	120 201	89 907	195	640 492
September	21 739	311	127 375	15 811	25 906	57 200	71 319	139 983	28 871	664 894

(a) Restrictions are placed on the release of statistics for certain commodities for reasons of confidentiality. These restrictions do not affect total export and import figures, but they can affect some items within commodity, industry and country tables. See *International Trade* (cat. no. 5422.0), Explanatory Notes, paragraph 30, for more details.

(b) Includes other commodity groups not listed.

Source: ABS data available on request.

## 6

## MERCHANDISE EXPORTS, BY SELECTED COUNTRIES AND COUNTRY GROUPS(a)

Period	European Union					South-East and North-East Asia				
	United States of America	Middle East	United Kingdom	Total European Union	New Zealand	Japan	China	Hong Kong	ASEAN(b)	Total
	\$'000	\$'000	\$'000	\$'000	\$'000	\$'000	\$'000	\$'000	\$'000	\$'000
<b>2000-01</b>	1 354 759	1 335 811	713 525	1 232 563	480 887	963 481	437 939	298 939	683 694	2 882 839
<b>2001-02</b>	1 597 719	1 825 194	784 284	1 337 855	568 712	937 578	406 163	240 066	597 414	2 594 269
<b>2002-03</b>	1 402 971	1 331 491	798 626	1 354 632	627 192	931 870	421 959	223 416	683 513	2 675 842
<b>2001-02</b>										
March	151 253	187 747	70 929	134 750	54 261	59 059	63 357	27 514	53 655	245 651
April	131 376	191 395	64 676	96 837	61 889	74 655	33 973	12 231	41 571	196 230
May	129 531	133 050	79 270	116 645	36 358	53 042	37 268	19 133	51 573	205 755
June	179 897	149 770	78 219	124 464	44 543	84 535	27 599	14 205	53 962	208 237
<b>2002-03</b>										
July	74 918	102 167	69 831	116 422	55 005	129 520	24 783	7 936	52 596	270 954
August	149 657	99 934	69 969	115 131	64 639	189 807	29 888	15 393	47 653	311 563
September	95 913	126 778	107 251	170 585	46 478	91 725	35 019	7 956	53 856	236 810
October	124 514	107 491	77 700	115 453	51 528	64 473	34 478	13 004	63 230	217 091
November	240 775	175 617	37 899	74 682	55 019	35 195	53 288	30 257	52 332	210 876
December	165 146	103 930	71 837	122 023	81 860	54 844	39 916	22 573	87 657	262 046
January	61 787	83 362	46 480	83 484	23 593	86 515	39 487	50 976	46 086	253 578
February	103 794	165 742	60 527	106 139	51 631	50 361	47 342	17 404	62 113	197 420
March	118 222	106 465	63 732	130 340	50 848	60 422	25 578	25 291	64 105	197 460
April	85 419	40 123	67 729	116 576	47 749	36 987	46 334	9 696	52 303	171 154
May	87 473	146 536	65 793	106 188	43 049	51 947	20 310	15 526	51 836	162 969
June	95 354	73 346	59 878	97 610	55 792	80 075	25 536	7 405	49 747	183 921
<b>2003-04</b>										
July	97 025	78 379	57 872	101 987	45 866	80 086	31 764	14 522	54 510	205 162
August	81 371	59 455	98 810	135 243	53 250	136 065	13 290	10 248	51 950	228 626
September	75 142	120 338	74 231	109 261	67 135	105 483	36 611	16 363	43 633	229 534

(a) See *International Merchandise Trade, Australia* (cat. no. 5422.0) for country group definitions.

(b) Figures from September 2001 have been updated to include Cambodia in the ASEAN country grouping.

Source: ABS data available on request.

## 7

## MERCHANDISE IMPORTS, BY SELECTED COMMODITY GROUP(a)

<i>Period</i>	<i>Food, beverages and tobacco</i>	<i>Petroleum and petroleum products</i>	<i>Chemicals</i>	<i>Textiles</i>	<i>Metals and metal manufactures</i>	<i>Machinery</i>	<i>Road vehicle parts and accessories</i>	<i>Other manufactured goods</i>	<i>Total(b)</i>
	\$'000	\$'000	\$'000	\$'000	\$'000	\$'000	\$'000	\$'000	\$'000
<b>2000-01</b>	183 196	968 428	284 227	97 281	315 327	1 205 016	854 759	926 817	5 044 553
<b>2001-02</b>	205 295	869 161	266 527	106 543	332 538	1 399 576	887 698	1 058 212	5 346 782
<b>2002-03</b>	248 567	859 621	292 133	101 033	394 043	1 458 419	997 944	1 103 484	5 724 298
<b>2001-02</b>									
March	12 504	39 514	35 457	8 338	26 536	94 835	72 474	79 012	389 943
April	11 993	78 266	24 836	9 947	27 980	113 247	81 305	79 415	450 747
May	14 585	62 102	27 331	9 842	27 092	117 219	80 639	86 692	445 885
June	15 103	64 704	14 566	8 448	26 002	96 307	73 499	77 657	393 051
<b>2002-03</b>									
July	17 666	66 712	18 971	7 211	33 106	111 832	88 041	91 501	454 751
August	20 355	63 951	19 172	11 171	35 439	121 990	83 005	97 867	476 144
September	19 907	79 309	20 554	8 920	32 522	123 896	77 186	92 519	474 629
October	27 427	75 644	20 997	11 574	36 988	138 644	102 861	111 149	549 856
November	25 409	99 478	18 138	8 474	32 137	129 215	85 053	98 790	523 005
December	23 239	138 539	18 900	7 312	29 398	161 327	57 850	91 780	549 430
January	20 923	10 582	27 344	7 314	37 903	134 051	81 618	100 239	443 540
February	17 995	143 475	37 879	6 736	29 245	91 475	76 676	92 669	522 180
March	19 157	21	38 512	8 263	31 177	95 171	82 654	86 550	384 990
April	19 541	69 369	27 577	8 053	29 854	114 412	82 397	77 488	450 980
May	18 051	84 235	26 308	8 739	35 544	132 816	92 346	79 073	496 266
June	18 898	28 307	17 783	7 265	30 731	103 589	88 258	83 859	398 528
<b>2003-04</b>									
July	19 975	23 106	18 137	7 796	33 387	130 916	89 600	100 416	445 703
August	19 054	35 817	16 581	6 917	34 320	112 537	81 149	99 315	426 472
September	20 966	27 840	15 076	7 122	40 208	116 313	87 801	98 983	433 969

(a) Restrictions are placed on the release of statistics for certain commodities for reasons of confidentiality. These restrictions do not affect total export and import figures, but they can affect some items within commodity, industry and country tables. See *International Trade* (cat. no. 5422.0), Explanatory Notes, paragraph 30, for more details.

(b) Includes other commodity groups not listed.

Source: ABS data available on request.

## 8

## TURNOVER OF RETAIL ESTABLISHMENTS, BY INDUSTRY—TREND

Period	Food retailing	Department stores	Clothing and soft good retailing	Household good retailing	Recreational good retailing	Other retailing	Hospitality and services	Total
	\$m	\$m	\$m	\$m	\$m	\$m	\$m	\$m
<b>2002-03</b>								
July	446.3	100.2	54.8	136.2	29.5	120.9	180.4	1 067.9
August	449.2	101.1	55.7	135.1	30.5	121.0	181.8	1 073.6
September	451.4	102.1	56.9	134.5	31.5	120.4	182.3	1 078.2
October	452.6	103.0	58.3	134.4	32.3	119.0	181.9	1 080.9
November	453.2	103.8	59.7	134.9	32.9	117.3	181.3	1 082.8
December	453.8	104.2	60.9	135.2	33.5	116.0	181.3	1 085.1
January	455.3	104.7	61.9	135.1	34.3	115.9	182.2	1 089.4
February	457.8	105.3	62.6	134.5	35.2	117.1	183.7	1 096.3
March	460.5	106.2	62.9	134.1	36.2	119.0	185.0	1 104.0
April	462.5	107.1	62.8	134.3	36.7	120.7	185.8	1 109.9
May	463.2	107.7	62.5	135.0	36.7	121.4	186.0	1 112.4
June	462.7	107.9	61.9	135.9	36.3	121.1	186.1	1 111.8
<b>2003-04</b>								
July	461.3	107.6	61.2	136.7	35.8	120.0	186.3	1 108.9
August	459.6	107.0	60.5	137.6	35.2	118.6	186.6	1 105.1
September	458.0	106.3	60.0	138.3	34.6	117.3	186.6	1 100.6

Source: Retail Trade, Australia (cat. no. 8501.0).

## 9

## NEW MOTOR VEHICLE SALES, BY TYPE OF VEHICLE

Period	Original			Seasonally adjusted			Trend estimate		
	Passenger vehicles	Other vehicles	Total	Passenger vehicles	Other vehicles	Total	Passenger vehicles	Other vehicles	Total
<b>2002-03</b>									
August	3 108	1 429	4 537	3 010	1 417	4 427	2 985	1 433	4 418
September	2 936	1 251	4 187	3 121	1 460	4 581	2 984	1 433	4 417
October	3 109	1 390	4 499	2 989	1 445	4 434	3 000	1 444	4 444
November	3 134	1 507	4 641	2 925	1 501	4 426	3 050	1 474	4 524
December	3 062	1 469	4 531	2 862	1 276	4 138	3 136	1 513	4 649
January	2 653	1 335	3 988	3 467	1 769	5 236	3 245	1 548	4 793
February	3 290	1 464	4 754	3 476	1 634	5 110	3 346	1 577	4 923
March	3 562	1 585	5 147	3 440	1 512	4 952	3 415	1 601	5 016
April	3 018	1 489	4 507	3 384	1 660	5 044	3 449	1 622	5 071
May	3 581	1 692	5 273	3 506	1 552	5 058	3 457	1 645	5 102
June	3 869	2 220	6 089	3 365	1 697	5 062	3 467	1 676	5 143
<b>2003-04</b>									
July	3 547	1 751	5 298	3 420	1 758	5 178	3 502	1 719	5 221
August	3 539	1 724	5 263	3 629	1 744	5 373	3 547	1 760	5 307
September	3 601	1 621	5 222	3 696	1 834	5 530	3 590	1 793	5 383
October	3 707	1 723	5 430	3 563	1 784	5 347	3 626	1 813	5 439

Source: Sales of New Motor Vehicles, Australia (cat. no. 9314.0.55.001).

# 10

## ACTUAL PRIVATE NEW CAPITAL EXPENDITURE, BY SELECTED INDUSTRY AND TYPE OF ASSET

Period	Industry			Total	Type of asset	
	Mining	Manufacturing	Other selected industries		New buildings and structures	Equipment, plant and machinery
ANNUAL (\$m)						
<b>2000-01</b>	434	891	1 537	2 862	692	2 170
<b>2001-02</b>	355	927	1 831	3 113	617	2 496
<b>2002-03</b>	648	1 176	2 189	4 015	778	3 238
QUARTERLY, ORIGINAL (\$m)						
<b>2001-02</b>						
March	78	198	439	714	136	578
June	101	256	539	897	159	738
<b>2002-03</b>						
September	117	237	466	821	159	662
December	173	306	679	1 159	216	943
March	148	287	462	897	163	734
June	210	346	582	1 138	239	899
QUARTERLY, TREND (\$m)						
<b>2001-02</b>						
March	n.a.	n.a.	n.a.	813	161	652
June	n.a.	n.a.	n.a.	864	163	701
<b>2002-03</b>						
September	n.a.	n.a.	n.a.	890	165	725
December	n.a.	n.a.	n.a.	934	180	754
March	n.a.	n.a.	n.a.	1 004	205	799
June	n.a.	n.a.	n.a.	1 088	228	860

Source: Private New Capital Expenditure, Australia (cat. no. 5625.0) and ABS data available on request.

# 11

## TOURIST ACCOMMODATION

Period	Licensed hotels with facilities				Motels and guesthouses				Serviced apartments			
	Estab-lish-ments	Guest rooms	Room occu-pancy	Takings	Estab-lish-ments	Guest rooms	Room occu-pancy	Takings	Estab-lish-ments	Guest rooms	Room occu-pancy	Takings
	no.	no.	%	\$'000	no.	no.	%	\$'000	no.	no.	%	\$'000
<b>2000-01</b>												
March	62	3 905	59.9	25 686	146	5 217	55.2	21 889	27	1 280	67.1	7 955
June	61	4 066	55.9	23 849	146	5 230	50.5	20 289	27	1 300	63.2	7 959
<b>2001-02</b>												
September	61	4 078	56.3	23 498	146	5 231	49.7	19 926	27	1 293	60.1	7 019
December	61	4 083	61.0	26 556	144	5 170	51.9	21 044	27	1 283	67.0	8 218
March	62	4 091	61.6	27 321	145	5 196	55.6	22 468	27	1 293	70.5	8 454
June	62	4 364	55.4	24 362	145	5 234	50.4	20 482	29	1 357	65.6	8 078
<b>2002-03</b>												
September	63	4 381	57.9	26 109	144	5 220	49.4	20 150	30	1 430	65.8	8 595
December	62	4 362	64.8	31 051	145	5 232	55.6	23 424	31	1 435	70.3	10 424
March	64	4 653	56.4	26 778	147	5 316	52.9	22 478	32	4 604	60.3	9 879

Source: Tourist Accommodation, Australia (cat. no. 8635.0).

Period	Houses		Total dwelling units		New residential building \$m	Alterations and additions to residential building \$m	Total residential building \$m	Non-residential building \$m	Total building \$m
	Private sector	Total	Private sector	Total					
	no.	no.	no.	no.					
ANNUAL									
<b>2000-01</b>	5 555	5 644	6 659	6 775	735.6	157.3	892.9	718.2	1 611.1
<b>2001-02</b>	8 858	9 177	10 544	10 903	1 202.3	191.6	1 393.9	804.8	2 198.7
<b>2002-03</b>	8 241	8 602	10 391	10 822	1 382.8	270.0	1 652.7	1 001.5	2 654.2
MONTHLY, ORIGINAL									
<b>2001-02</b>									
June	716	742	798	826	96.2	17.6	113.9	68.3	182.1
<b>2002-03</b>									
July	795	843	877	935	113.7	20.1	133.8	53.3	187.2
August	807	838	1 037	1 072	110.2	22.0	132.2	121.0	253.2
September	762	795	825	860	99.7	20.3	120.0	75.1	195.1
October	729	767	1 083	1 125	198.0	20.5	218.5	56.1	274.6
November	720	760	881	933	117.1	20.1	137.2	162.8	300.0
December	570	614	822	882	111.7	19.5	131.2	64.6	195.8
January	493	514	756	783	103.6	16.7	120.2	42.4	162.7
February	633	651	715	745	96.4	20.3	116.6	65.2	181.8
March	667	678	1 040	1 051	120.8	49.8	170.6	48.4	218.9
April	591	614	683	706	88.8	20.3	109.1	95.6	204.7
May	704	720	805	823	107.8	20.5	128.3	105.4	233.6
June	770	808	867	907	115.1	20.0	135.0	111.5	246.5
<b>2003-04</b>									
July	870	893	979	1 004	138.2	23.3	161.5	86.5	248.0
August	676	705	824	872	113.2	19.4	132.6	92.4	225.0
September	784	812	930	962	126.5	24.0	150.5	38.1	188.6
MONTHLY, TREND									
<b>2001-02</b>									
June	749	778	919	951	102.8	18.1	120.9	61.1	182.0
<b>2002-03</b>									
July	752	784	918	954	101.6	18.9	120.4	68.7	189.1
August	749	785	918	959	102.4	19.6	122.0	79.0	201.0
September	735	774	918	963	105.5	19.9	125.4	87.5	212.9
October	710	749	913	960	110.0	20.0	130.0	91.8	221.8
November	678	714	902	947	114.2	20.1	134.3	90.7	224.9
December	646	678	876	918	115.9	20.3	136.2	84.8	221.0
January	624	651	848	884	114.7	20.7	135.4	78.5	213.8
February	619	641	828	857	111.8	21.2	133.0	76.0	209.0
March	633	652	819	842	108.7	21.5	130.2	79.6	209.8
April	660	679	821	842	106.8	21.5	128.4	86.3	214.6
May	690	712	833	857	107.3	21.4	128.6	92.7	221.4
June	716	741	847	876	109.7	21.2	130.8	93.9	224.7
<b>2003-04</b>									
July	735	762	862	895	113.1	21.0	134.1	88.8	222.9
August	748	777	878	914	116.8	21.0	137.8	80.3	218.1
September	757	787	884	923	119.7	20.9	140.6	70.6	211.2

Source: Building Approvals, Australia (cat. no. 8731.0) and ABS data available on request.

## 13

## BUILDING COMMENCEMENTS

Period	New houses		Total dwelling units(a)		New residential building \$m	Alterations and additions to residential building \$m	Non-residential building		
	Private sector	Total	Private sector	Total			Private sector	Total	Total building
	no.	no.	no.	no.			\$m	\$m	\$m
<b>2000-01</b>	5 303	5 390	6 442	6 556	779.2	161.4	390.4	729.6	1 670.1
<b>2001-02</b>	8 030	8 281	9 702	9 991	1 236.2	197.3	575.0	761.9	2 195.5
<b>2002-03</b>	7 893	8 234	9 890	10 308	1 441.0	253.2	644.6	932.8	2 627.1
<b>2000-01</b>									
June	1422	1443	1605	1628	196.0	47.9	91.9	300.7	544.6
<b>2001-02</b>									
September	1835	1857	2365	2400	324.0	45.1	145.3	188.7	557.9
December	2217	2273	2543	2613	307.8	52.7	167.2	199.4	559.9
March	1853	1949	2232	2335	280.0	50.5	122.6	173.7	504.1
June	2125	2202	2563	2644	324.4	49.0	139.9	200.1	573.6
<b>2002-03</b>									
September	2302	2403	2619	2732	355.6	55.9	177.7	249.0	660.5
December	1897	2004	2636	2759	402.7	75.0	144.8	268.1	745.8
March	1821	1903	2254	2366	320.9	57.6	154.9	188.0	566.6
June	1872	1924	2381	2450	361.8	64.7	167.2	227.7	654.2

(a) Includes conversions.

Source: Building Activity, Australia (cat. no. 8752.0).



## VALUE OF BUILDING WORK DONE AND COMPLETED DURING PERIOD

Period	New houses		New residential building			Non-residential building		Total building		
	Private sector	Total	Private sector	Total	Alterations and additions to residential building	Total residential building	Private sector	Total	Private sector	Total
	\$m	\$m	\$m	\$m	\$m	\$m	\$m	\$m	\$m	\$m
VALUE OF BUILDING WORK DONE										
<b>2000-01</b>	679.7	686.9	835.5	845.0	161.9	1 006.9	395.0	624.0	1 385.4	1 630.9
<b>2001-02</b>	852.9	871.7	1 043.3	1 065.3	193.9	1 259.2	522.1	778.2	1 754.6	2 037.4
<b>2002-03</b>	1 051.5	1 088.9	1 275.6	1 318.8	247.4	1 566.2	626.1	890.9	2 146.5	2 457.1
<b>2000-01</b>										
June	161.6	163.8	197.3	200.3	48.2	248.6	97.2	163.9	340.6	412.5
<b>2001-02</b>										
September	184.2	187.2	227.7	231.2	48.7	279.9	112.7	170.6	386.9	450.6
December	219.4	222.6	261.9	265.5	48.4	314.0	146.9	213.8	456.3	527.7
March	215.1	220.0	262.5	268.6	46.9	315.5	131.3	185.0	439.7	500.4
June	234.2	242.0	291.2	300.0	49.8	349.8	131.3	208.9	471.7	558.7
<b>2002-03</b>										
September	259.7	269.0	318.5	328.6	56.4	385.0	163.1	224.6	537.4	609.6
December	255.9	265.3	319.6	330.0	67.7	397.7	151.8	212.0	538.6	609.7
March	260.4	269.4	303.5	314.0	59.1	373.0	143.2	205.0	505.3	578.0
June	275.5	285.2	334.0	346.3	64.2	410.5	168.0	249.4	565.3	659.8
VALUE OF BUILDING WORK COMPLETED										
<b>2000-01</b>	758.7	763.6	942.8	949.0	154.4	1 103.4	436.3	591.5	1 526.5	1 694.9
<b>2000-01</b>	750.8	766.9	884.9	904.3	180.6	1 084.9	430.7	718.7	1 489.7	1 803.5
<b>2002-03</b>	935.8	968.7	1 145.4	1 181.3	227.6	1 408.9	551.6	726.1	1 922.6	2 135.0
<b>2000-01</b>										
June	188.0	188.3	213.7	213.9	52.2	266.1	137.9	164.9	402.4	431.0
<b>2001-02</b>										
September	149.9	153.2	173.1	177.6	55.0	232.6	75.5	121.1	300.5	353.7
December	194.3	197.6	220.5	224.4	38.1	262.5	129.3	259.9	386.3	522.4
March	174.8	177.2	231.9	234.8	39.4	274.2	83.8	127.4	353.7	401.6
June	231.7	238.9	259.4	267.4	48.1	315.6	142.1	210.3	449.2	525.9
<b>2002-03</b>										
September	209.1	219.4	240.1	252.2	45.5	297.7	111.7	164.9	396.6	462.6
December	242.1	247.2	356.7	362.6	62.1	424.7	130.0	161.6	548.5	586.4
March	197.3	204.6	228.6	236.1	55.3	291.4	144.7	194.8	428.2	486.2
June	287.3	297.5	320.1	330.4	64.7	395.1	165.2	204.8	549.4	599.8

Source: Building Activity, Australia (cat. no. 8752.0).

<i>Period</i>	<i>Pigmeat</i> <i>tonnes</i>	<i>Beef</i> <i>tonnes</i>	<i>Mutton</i> <i>tonnes</i>	<i>Lamb</i> <i>tonnes</i>	<i>Sawn timber</i> <i>m<sup>3</sup></i>
<b>2000-01</b>	36 679	82 533	36 103	61 893	389 417
<b>2001-02</b>	48 329	85 882	30 342	64 285	434 577
<b>2002-03</b>	64 146	88 363	30 893	60 113	435 984
<b>2001-02</b>					
September	10 274	18 271	6 290	11 694	103 774
December	9 754	21 325	8 221	17 627	111 797
March	12 583	23 748	8 895	17 232	111 697
June	15 718	22 539	6 936	17 732	107 309
<b>2002-03</b>					
September	15 531	19 663	9 351	11 493	111 724
December	14 865	23 357	10 073	14 864	110 734
March	16 345	23 930	7 521	17 947	107 267
June	17 405	21 413	3 948	15 809	106 259
September	15 415	15 611	4 527	12 379	—

Source: *Livestock Products, Australia* (cat. no. 7215.0) and ABS data available on request.

## 16

## CONSUMER PRICE INDEX, BY GROUP—ADELAIDE

<i>Period</i>	<i>Food</i>	<i>Alcohol and tobacco</i>	<i>Clothing and footwear</i>	<i>Housing</i>	<i>House furnishings, supplies and services</i>	<i>Health</i>	<i>Transportation</i>	<i>Communication</i>	<i>Recreation</i>	<i>Education</i>	<i>Miscellaneous</i>	<i>All groups</i>
ANNUAL AVERAGE (1989-90 = 100.0)												
<b>2000-01</b>	136.7	198.3	111.9	104.3	117.1	169.5	138.0	104.7	122.9	225.9	159.3	133.5
<b>2001-02</b>	143.1	207.3	111.1	108.2	120.6	173.0	135.8	105.8	126.9	235.8	165.1	137.2
<b>2002-03</b>	149.3	214.1	112.3	115.2	122.5	183.4	139.6	109.7	131.8	246.1	171.5	142.7
QUARTERLY (1989-90 = 100.0)												
<b>2001-02</b>												
June	143.6	210.0	113.0	109.5	120.9	178.0	138.4	107.3	129.9	240.6	167.0	139.1
<b>2002-03</b>												
September	145.4	210.4	111.5	112.1	121.4	178.1	138.0	109.2	131.5	240.7	171.2	140.3
December	148.1	213.3	112.2	113.0	123.2	178.1	138.8	109.6	131.5	240.7	170.9	141.5
March	151.9	216.0	111.9	117.9	122.5	183.2	144.0	109.9	132.4	251.5	171.6	144.6
June	151.9	216.8	113.5	117.8	122.9	194.0	137.4	110.1	131.7	251.5	172.2	144.3
<b>2003-04</b>												
September	152.8	220.0	111.4	120.2	122.2	193.9	140.7	111.0	130.7	251.8	176.5	145.4
PERCENTAGE CHANGE FROM SAME QUARTER OF PREVIOUS YEAR												
<b>2001-02</b>												
June	3.0	3.3	0.6	4.4	1.3	3.9	-1.4	3.3	6.0	4.2	3.6	3.0
<b>2002-03</b>												
September	3.5	2.2	2.9	5.0	0.7	4.2	1.2	5.4	6.8	4.2	4.7	3.7
December	3.0	3.8	0.0	4.7	1.9	5.2	3.3	3.4	4.7	4.2	4.3	3.6
March	5.0	3.9	1.2	8.6	2.1	5.5	7.5	3.5	2.6	4.5	3.4	5.0
June	5.8	3.2	0.4	7.6	1.7	9.0	-0.7	2.6	1.4	4.5	3.1	3.7
<b>2003-2004</b>												
September	5.1	4.6	-0.1	7.2	0.7	8.9	2.0	1.6	-0.6	4.6	3.1	3.6
PERCENTAGE CHANGE FROM PREVIOUS QUARTER												
<b>2001-02</b>												
June	-0.7	1.1	2.2	0.8	0.8	2.5	3.4	1.0	0.7	0.0	0.6	1.0
<b>2002-03</b>												
September	1.3	0.2	-1.3	2.4	0.4	0.1	-0.3	1.8	1.2	0.0	2.5	0.9
December	1.9	1.4	0.6	0.8	1.5	0.0	0.6	0.4	0.0	0.0	-0.2	0.9
March	2.6	1.3	-0.3	4.3	-0.6	2.9	3.7	0.3	0.7	4.5	0.4	2.2
June	0.0	0.4	1.4	-0.1	0.3	5.9	-4.6	0.2	-0.5	0.0	0.3	-0.2
<b>2002-03</b>												
September	0.6	1.5	-1.9	2.0	-0.6	-0.1	2.4	0.8	-0.8	0.1	2.5	0.8

Source: Consumer Price Index (cat. no. 6401.0).

# 17

## ESTIMATED RESIDENT POPULATION AND COMPONENTS OF POPULATION CHANGE(a)

Period	Net migration			Total increase	Population at end of period
	Natural increase	Interstate	Overseas(b)		
<b>1999-00</b>	6 306	-3 531	3 829	7 219	1 505 038
<b>2000-01</b>	5 495	-2 418	2 765	6 690	1 511 728
<b>2001-02</b>	5 887	-1 854	4 481	8 514	1 520 242
<b>2000-01</b>					
March	1 691	-821	1 276	2 358	1 510 386
June	1 272	-190	46	1 342	1 511 728
<b>2001-02</b>					
September	1 244	-632	1 130	1 742	1 513 470
December	1 264	-171	1 185	2 278	1 515 748
March	1 737	-529	1 665	2 873	1 518 621
June	1 642	-522	501	1 621	1 520 242
<b>2002-03</b>					
September	948	-17	1 283	2 214	1 522 456
December	1 484	-741	937	1 680	1 524 136
March	1 704	-513	2 827	4 018	1 528 154

(a) Differences between the sum of the components and the total of population growth are attributed to intercensal discrepancy.

(b) Includes category jumping. For further information please see *Demography Working Paper 2003/1—Estimated Resident Population and Measurement of Category Jumping*.

Source: Australian Demographic Statistics (cat. no. 3101.0).

# 18

## BIRTHS, DEATHS, MARRIAGES AND DIVORCES(a)

Period	Registrations			
	Births	Deaths	Marriages	Divorces
<b>1999-00</b>	17 896	11 590	8 428	4 197
<b>2000-01</b>	17 414	11 919	7 689	4 072
<b>2001-02</b>	17 481	11 594	7 474	4 448
<b>2000-01</b>				
December	4 274	2 889	2 703	1 031
March	4 402	2 711	2 175	824
June	4 297	3 025	1 719	1 161
<b>2001-02</b>				
September	4 398	3 154	1 096	1 387
December	4 109	2 845	2 444	1 173
March	4 564	2 827	2 135	930
June	4 410	2 768	1 799	958
<b>2002-03</b>				
September	4 355	3 407	1 019	1 062
December	4 327	2 843	2 419	n.y.a.
March	4 265	2 561	n.y.a.	n.y.a.

(a) The quarterly series of Marriage and Divorce numbers has been discontinued. Numbers and rates for both collections are available through the annual ABS publication *Marriages and Divorces* (cat. no. 3310.0).

Source: Australian Demographic Statistics (cat. no. 3101.0).

## 19

## CIVILIAN LABOUR FORCE STATUS(a)

Period	Employed full-time		Employed part-time		Total employed		Unemployed		Labour force	
	Males	Females	Males	Females	Males	Females	Males	Females	Males	Females
ANNUAL AVERAGE ('000)										
<b>2000-01</b>	322.6	156.7	54.8	143.5	377.4	300.2	32.6	20.2	410.0	320.4
<b>2001-02</b>	319.2	153.2	59.2	153.1	378.4	306.3	31.8	20.0	410.2	326.2
<b>2002-03</b>	331.8	159.6	56.8	156.5	388.6	316.1	27.7	19.0	416.4	335.1
MONTHLY, ORIGINAL ('000)										
<b>2002-03</b>										
August	324.8	150.6	54.8	155.7	379.6	306.3	28.8	20.1	408.4	326.4
September	327.8	154.8	63.3	158.8	391.1	313.5	26.9	21.2	418.0	334.7
October	322.4	155.4	62.2	157.5	384.6	312.9	26.2	18.9	410.8	331.8
November	327.1	154.1	57.2	160.1	384.3	314.2	26.7	17.0	410.9	331.2
December	337.6	162.7	56.3	154.4	393.9	317.1	24.3	17.6	418.2	334.6
January	336.0	163.1	51.0	149.4	387.0	312.5	30.5	18.8	417.5	331.4
February	338.4	168.6	50.6	150.0	389.0	318.6	31.5	19.9	420.5	338.5
March	331.8	166.1	59.8	158.4	391.6	324.5	26.7	20.0	418.3	344.4
April	333.2	163.6	58.7	158.6	391.9	322.2	28.8	17.9	420.6	340.0
May	336.7	165.1	56.4	158.2	393.2	323.3	29.1	18.7	422.3	342.0
June	340.8	160.9	54.5	161.8	395.3	322.7	27.3	19.3	422.6	342.0
<b>2003-04</b>										
July	341.1	168.5	57.1	151.6	398.2	320.1	23.5	19.0	421.7	339.1
August	335.4	160.7	60.0	157.4	395.4	318.0	23.8	20.3	419.2	338.3
September	334.6	169.0	60.5	155.0	395.1	324.0	24.7	22.4	419.8	346.4
October	331.8	161.2	60.3	159.7	392.1	320.9	25.4	19.2	417.5	340.1
MONTHLY, TREND ('000)										
<b>2002-03</b>										
August	324.1	151.1	59.6	158.1	383.7	309.2	28.4	20.1	412.1	329.3
September	325.3	152.0	59.6	157.2	384.9	309.2	27.4	20.0	412.3	329.2
October	327.1	153.6	59.0	156.5	386.1	310.1	26.6	19.6	412.7	329.7
November	329.2	156.2	57.8	155.8	387.0	312.0	26.3	19.1	413.4	331.1
December	331.2	159.4	56.6	155.1	387.8	314.5	26.5	18.5	414.3	333.1
January	333.0	162.4	55.5	155.0	388.5	317.4	27.1	18.2	415.6	335.6
February	334.7	165.0	54.8	155.2	389.5	320.2	27.8	18.0	417.3	338.2
March	336.4	166.7	54.6	155.7	391.0	322.4	28.4	18.1	419.4	340.5
April	337.7	167.3	55.1	156.4	392.8	323.7	28.5	18.5	421.4	342.1
May	338.4	166.9	56.0	156.9	394.4	323.8	28.1	18.9	422.6	342.7
June	338.6	166.0	57.0	157.0	395.6	323.0	27.3	19.4	422.9	342.4
<b>2003-04</b>										
July	338.1	165.1	57.9	156.9	396.0	322.0	26.5	20.0	422.5	341.9
August	337.2	164.2	58.7	156.7	395.9	320.9	25.8	20.4	421.6	341.4
September	336.0	163.4	59.4	156.6	395.4	320.0	25.1	20.8	420.5	340.8
October	334.5	162.6	60.2	156.7	394.7	319.3	24.6	21.1	419.3	340.5

(a) Population aged 15 years and over.

Source: Labour Force, Australia (cat. no. 6202.0).

Period	Civilian population			Unemployment rate			Participation rate		
	Males aged 15 and over	Females aged 15 and over	Persons aged 15-19	Males all ages	Females all ages	Persons all ages	Males	Females	Persons
	'000	'000	%	%	%	%	%	%	%
ANNUAL AVERAGE									
<b>2000-01</b>	591.6	616.9	17.9	8.0	6.3	7.2	69.3	51.9	60.4
<b>2001-02</b>	595.4	620.5	18.5	7.8	6.1	7.1	68.9	52.6	60.6
<b>2002-03</b>	600.7	625.5	16.8	6.7	5.7	6.2	69.3	53.6	61.3
MONTHLY, ORIGINAL									
<b>2002-03</b>									
August	598.4	623.5	16.3	7.0	6.2	6.7	68.2	52.4	60.1
September	598.9	624.0	16.6	6.4	6.3	6.4	69.8	53.6	61.5
October	599.3	624.4	16.3	6.4	5.7	6.1	68.5	53.1	60.7
November	599.8	624.8	14.9	6.5	5.1	5.9	68.5	53.0	60.6
December	600.2	625.2	15.5	5.8	5.3	5.6	69.7	53.5	61.4
January	600.9	625.8	19.7	7.3	5.7	6.6	69.5	53.0	61.0
February	601.6	626.3	18.3	7.5	5.9	6.8	69.9	54.0	61.8
March	602.3	626.9	15.9	6.4	5.8	6.1	69.4	54.9	62.0
April	602.7	627.1	18.0	6.8	5.3	6.1	69.8	54.2	61.9
May	603.0	627.4	20.1	6.9	5.5	6.3	70.0	54.5	62.1
June	603.4	627.6	17.4	6.5	5.6	6.1	70.0	54.5	62.1
<b>2003-04</b>									
July	603.8	628.1	15.5	5.6	5.6	5.6	69.8	54.0	61.8
August	604.3	628.4	18.4	5.7	6.0	5.8	69.4	53.8	61.5
September	604.7	628.9	20.1	5.9	6.5	6.1	69.4	55.1	62.1
October	605.5	629.7	18.6	6.1	5.7	5.9	69.0	54.0	61.3
MONTHLY, TREND									
<b>2002-03</b>									
August	n.a.	n.a.	n.a.	6.9	6.1	6.5	68.9	52.8	60.7
September	n.a.	n.a.	n.a.	6.6	6.1	6.4	68.8	52.8	60.6
October	n.a.	n.a.	n.a.	6.5	5.9	6.2	68.9	52.8	60.7
November	n.a.	n.a.	n.a.	6.4	5.8	6.1	68.9	53.0	60.8
December	n.a.	n.a.	n.a.	6.4	5.6	6.0	69.0	53.3	61.0
January	n.a.	n.a.	n.a.	6.5	5.4	6.0	69.2	53.6	61.2
February	n.a.	n.a.	n.a.	6.7	5.3	6.1	69.4	54.0	61.5
March	n.a.	n.a.	n.a.	6.8	5.3	6.1	69.6	54.3	61.8
April	n.a.	n.a.	n.a.	6.8	5.4	6.2	69.9	54.6	62.1
May	n.a.	n.a.	n.a.	6.7	5.5	6.1	70.1	54.6	62.2
June	n.a.	n.a.	n.a.	6.5	5.7	6.1	70.1	54.6	62.2
<b>2003-04</b>									
July	n.a.	n.a.	n.a.	6.3	5.8	6.1	70.0	54.4	62.0
August	n.a.	n.a.	n.a.	6.1	6.0	6.1	69.8	54.3	61.9
September	n.a.	n.a.	n.a.	6.0	6.1	6.0	69.5	54.2	61.7
October	n.a.	n.a.	n.a.	5.9	6.2	6.0	69.3	54.1	61.6

(a) Population aged 15 years and over.

Source: Labour Force, Australia (cat. no. 6202.0).

## 21

## AVERAGE WEEKLY EARNINGS OF EMPLOYEES

Period	Males			Females			Persons		
	Full-time adult ordinary time earnings	Full-time adult total earnings	All males total earnings	Full-time adult ordinary time earnings	Full-time adult total earnings	All females total earnings	Full-time adult ordinary time earnings	Full-time adult total earnings	All employees total earnings
ANNUAL AVERAGE (\$ per week)									
<b>2000-01</b>	811.30	864.40	746.80	685.20	703.90	491.20	765.70	806.40	619.70
<b>2001-02</b>	830.20	890.18	775.00	731.10	744.33	505.18	797.18	841.68	643.75
<b>2002-03</b>	864.85	914.08	790.10	772.03	785.75	530.28	833.75	871.05	667.48
QUARTERLY, ORIGINAL (\$ per week)									
<b>2001-02</b>									
May	829.40	899.40	783.50	735.10	749.80	503.80	799.40	851.80	649.90
<b>2002-03</b>									
August	829.90	877.40	765.50	757.20	770.30	543.20	805.50	841.40	661.80
November	851.10	902.10	781.00	755.80	769.30	527.20	818.90	857.20	662.40
February	884.60	933.00	810.50	781.60	795.60	550.70	850.90	888.00	692.30
May	893.80	943.80	803.40	793.50	807.80	500.00	859.70	897.60	653.40
August	895.00	942.60	773.80	803.70	817.80	504.50	863.90	900.10	643.20
QUARTERLY, TREND (\$ per week)									
<b>2001-02</b>									
May	828.50	892.40	774.10	744.30	757.90	513.50	801.00	848.30	649.10
<b>2002-03</b>									
August	835.80	892.80	776.80	750.50	763.90	527.90	807.50	850.20	660.70
November	853.70	903.20	786.70	761.70	775.50	537.50	823.10	860.80	671.70
February	875.90	923.30	796.40	777.30	791.50	531.90	842.80	879.20	671.90
May	892.70	941.40	798.40	793.50	807.60	517.70	859.30	896.10	663.00
August	903.50	954.40	792.20	809.70	822.80	500.90	871.90	909.70	648.90

Source: Average Weekly Earnings, States and Australia (cat. no. 6302.0).

## 22

## SECURED HOUSING FINANCE COMMITMENTS(a)

Period	Original		Seasonally adjusted		Trend	
	Dwelling units	Value	Dwelling units	Value	Dwelling units	Value
	no.	\$m	no.	\$m	no.	\$m
<b>2002-03</b>						
July	4 988	524	4 711	502	4 500	501
August	4 166	476	4 367	508	4 427	504
September	3 825	454	4 171	493	4 307	503
October	4 329	517	4 261	517	4 193	500
November	4 336	529	4 038	494	4 133	499
December	4 322	539	4 128	496	4 159	506
January	3 765	465	4 233	517	4 259	522
February	4 112	508	4 321	522	4 403	546
March	4 814	617	4 728	600	4 554	574
April	4 583	580	4 634	593	4 690	602
May	5 089	671	4 903	650	4 794	656
June	4 975	649	4 876	647	4 869	644
<b>2003-04</b>						
July	5 115	661	4 863	638	4 933	659
August	4 610	627	4 935	685	4 988	670
September	4 937	655	5 117	673	5 023	676

(a) Excludes alterations and additions. Includes refinancing.

Source: Housing Finance for Owner Occupation, Australia (cat. no. 5609.0).

## 23

## FINANCE COMMITMENTS

Period	Commercial finance commitments			Personal finance commitments			Total lease finance commitments
	Fixed loan facilities	Revolving credit facilities	Total commercial finance commitments	Fixed loan facilities	Revolving credit facilities	Total personal finance commitments	
	\$m	\$m	\$m	\$m	\$m	\$m	
<b>2002-03</b>							
July	593.0	413.3	1 006.3	198.3	180.2	378.5	15.2
August	524.6	484.1	1 008.7	195.7	180.2	375.9	12.3
September	524.0	433.9	957.9	180.2	150.1	330.4	13.4
October	545.4	372.3	917.7	190.4	182.3	372.8	14.2
November	519.2	341.6	860.8	199.1	190.1	389.2	12.8
December	706.9	373.0	1 079.9	210.0	204.9	414.9	14.2
January	616.6	272.2	888.9	210.5	147.3	357.8	15.3
February	469.0	244.5	713.5	210.0	155.4	365.4	13.6
March	589.7	289.8	879.5	218.9	204.8	423.6	17.3
April	602.5	208.2	810.7	212.2	186.4	398.6	13.1
May	571.8	269.8	841.6	234.1	205.9	440.0	15.5
June	785.8	316.2	1 102.0	239.1	210.9	450.0	18.6
<b>2003-04</b>							
July	651.5	452.7	1 104.2	234.9	222.6	457.5	16.6
August	612.7	314.8	927.5	205.8	213.6	419.4	13.1
September	606.3	344.8	951.2	218.0	208.9	426.9	14.9

Source: ABS data available on request.



## SOURCES FOR SUMMARY TABLES (TABLES 1 AND 2)

- (1) *Australian National Accounts: National Income, Expenditure and Product*, cat. no. 5206.0—and ABS data available on request
- (2) International Merchandise Trade, ABS data available on request
- (3) *Retail Trade, Australia*, cat. no. 8501.0, Monthly
- (4) *Sales of New Motor Vehicles, Australia*, cat. no. 9314.0.55.001 Monthly
- (5) *Private New Capital Expenditure, Australia*, cat. no. 5625.0, Quarterly—and Ausstats data
- (6) *Tourist Accommodation, Australia*, cat. no. 8635.0, Quarterly
- (7) *Building Approvals, Australia*, cat. no. 8731.0, Monthly
- (8) *Building Activity, Australia*, cat. no. 8752.0, Quarterly
- (9) *Engineering Construction Activity, Australia*, cat. no. 8762.0, Quarterly
- (10) *Manufacturing Production, Australia, Preliminary*, cat. no. 8301.0, Quarterly
- (11) *Livestock Products, Australia*, cat. no. 7215.0, Quarterly—and ABS data available on request
- (12) *Actual and Expected Private Mineral Exploration, Australia*, cat. no. 8412.0, Quarterly
- (13) *Consumer Price Index*, cat. no. 6401.0, Quarterly
- (14) *Producer Price Indexes, Australia*, cat. no. 6427.0, Quarterly
- (15) *House Price Indexes: Eight Capital Cities*, cat. no. 6416.0, Quarterly
- (16) *Australian Demographic Statistics*, cat. no. 3101.0, Quarterly
- (17) *Labour Force, Australia, Preliminary*, cat. no. 6202.0, Monthly
- (18) *Job Vacancies, Australia*, cat. no. 6354.0, Quarterly
- (19) *Industrial Disputes, Australia*, cat. no. 6321.0, Monthly
- (20) *Average Weekly Earnings, States and Australia*, cat. no. 6302.0, Quarterly
- (21) *Wage Cost Index, Australia*, cat. no. 6345.0, Quarterly
- (22) *Housing Finance for Owner Occupation, Australia*, cat. no. 5609.0, Monthly
- (23) *Lending Finance, Australia*, cat. no. 5671.0, Monthly—and ABS data available on request
- (24) *Reserve Bank of Australia Bulletin*





## FOR MORE INFORMATION...

- INTERNET* **www.abs.gov.au** the ABS web site is the best place to start for access to summary data from our latest publications, information about the ABS, advice about upcoming releases, our catalogue, and Australia Now—a statistical profile.
- LIBRARY* A range of ABS publications is available from public and tertiary libraries Australia-wide. Contact your nearest library to determine whether it has the ABS statistics you require, or visit our web site for a list of libraries.
- CPI INFOLINE* For current and historical Consumer Price Index data, call 1902 981 074 (call cost 77c per minute).
- DIAL-A-STATISTIC* For the latest figures for National Accounts, Balance of Payments, Labour Force, Average Weekly Earnings, Estimated Resident Population and the Consumer Price Index call 1900 986 400 (call cost 77c per minute).

## INFORMATION SERVICE

Data which have been published and can be provided within five minutes are free of charge. Our information consultants can also help you to access the full range of ABS information—ABS user-pays services can be tailored to your needs, time frame and budget. Publications may be purchased. Specialists are on hand to help you with analytical or methodological advice.

- PHONE* **1300 135 070**
- EMAIL* **client.services@abs.gov.au**
- FAX* 1300 135 211
- POST* Client Services, ABS, GPO Box 796, Sydney 2001

## WHY NOT SUBSCRIBE?

ABS subscription services provide regular, convenient and prompt deliveries of ABS publications and products as they are released. Email delivery of monthly and quarterly publications is available.

- PHONE* 1300 366 323
- EMAIL* subscriptions@abs.gov.au
- FAX* 03 9615 7848
- POST* Subscription Services, ABS, GPO Box 2796Y, Melbourne 3001



2130740012037  
ISSN 1039-8880

RRP \$21.00